



BRENT INTERNATIONAL SCHOOL BAGUIO SCHOOL PROFILE 2023



Brent Road, Baguio City, Philippines
+63-74-4424050
www.brentbaguio.edu.ph



MISSION STATEMENT

Brent Schools (Baguio, Subic, and Manila) in a Christian ecumenical environment in the Philippines) are committed to develop individual students as responsible global citizens and leaders in their respective communities, with a multi-cultural and international perspective and equipped for entry to colleges and universities throughout the world.

EXPECTED SCHOOL-WIDE LEARNING RESULTS

RESPONSIBLE CITIZENS who exercise leadership; work cooperatively with others; are sensitive; and responsible to the needs of their communities.

CRITICAL THINKERS who are self-directed; solve problems creatively; and contribute their talents to their communities.

TECHNOLOGICALLY LITERATE INDIVIDUALS who use technology effectively to achieve personal, professional, and academic betterment; adapt their skills to respond to the needs of a changing world; and use technology in an ethically responsible manner.

HEALTHY INDIVIDUALS who exhibit behaviors conducive to physical wellness; understand the spiritual and emotional dimensions of health; and are appropriate role models of wellness in their communities.

TOLERANT INDIVIDUALS who are familiar with and proud of their own cultural traditions; are familiar with and appreciate diverse cultures and value systems; and recognize that they are members of a global community.

EFFECTIVE COMMUNICATORS who demonstrate accuracy and fluency in written and oral communication; demonstrate the ability to listen and understand; take responsibility for the messages within their communications.

LIFE-LONG LEARNERS who are intellectually curious, have a passion for the truth, and integrate and apply what they learn.

LEADERSHIP 2023 - 2024

President & CEO Mr. Dick Robbins

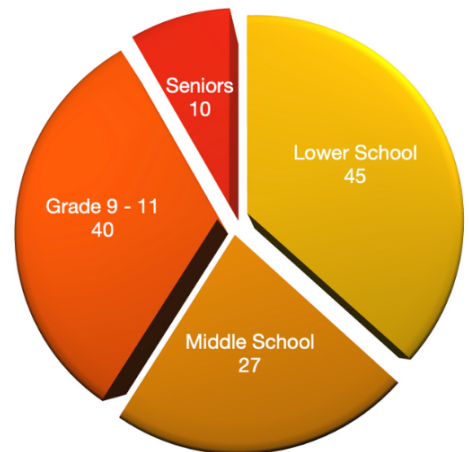
Headmaster Dr. Celeste R. Engler
ccoronado@brentbaguio.edu.ph

IB Coordinator Mr. Paul Engler
paul.engler@brentbaguio.edu.ph

School Counselor Ms. Almae Caluya
almae.caluya@brentbaguio.edu.ph

Assistant Registrar Ms. Jennie Umaging
jennie.umaging@brentbaguio.edu.ph

SCHOOL POPULATION



Total: 122

Faculty-Student Ratio: **5:1**

Nationalities Represented: **11**

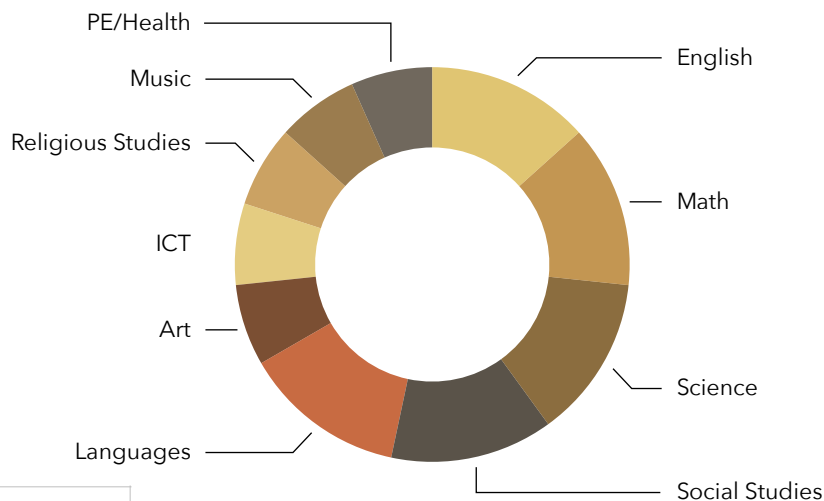


IB CODE: 000214 | HIGH SCHOOL CODE: 705120
SAT TEST CENTER: 74810 | ACT TEST CENTER: 867460

ACADEMIC PROGRAMS

OUR CURRICULUM

The curricula at Brent Baguio are designed to align with the school's mission. In Grades 11 and 12, the small class sizes create an environment conducive to personalized teaching and learning. Subjects are typically offered if there is a minimum of three students interested in taking the course.



GRADING SYSTEM

Letter Grade	Grade Point	Percent Equivalent	IB Mark	IB Descriptors
A+	4.0	100 - 97	7	Excellent
A	4.0	96 - 93	6	Very Good
A-	3.7	92 - 90	5	Good
B+	3.3	89 - 87	5	Good
B	3.0	86 - 83	4	Satisfactory
B-	2.7	82 - 80	4	Satisfactory
C+	2.3	79 - 77	4	Satisfactory
C	2.0	76 - 73	4	Satisfactory
C-	1.7	72 - 70	3	Mediocre
D+	1.3	69 - 67	3	Mediocre
D	1.0	66 - 63	3	Poor
D-	0.7	62 - 60	2	Poor
F	0	59 and below	1	Very Poor
INC	INCOMPLETE	Brent Baguio does not publish the specific ranking of our students. The cumulative GPA is based solely on courses taken at Brent and is reported on a weighted 4.00 scale.		
WD	WITHDRAWN	Grades from other schools are noted on the transcript but may not factor into the GPA calculation. IB Higher Level courses are indicated as (IBHL) on transcripts and receive an additional weighting of 0.50.		
NC	NO CREDIT			

Grade 11 and 12 students must take six classes, choosing one from each of the listed Course Offerings groups. Additionally, Grade 11 students attend sessions on Creativity, Activity, and Service (CAS) and College Preparation in the first quarter, followed by the Extended Essay in the second semester, with Theory of Knowledge (TOK) workshops in between. Students are also required to complete the TOK class - one semester in Grade 11 and another in Grade 12. The CAS program must be completed within 18 months. Fulfilling these course requirements over the final two years of study leads to qualification for either the Brent Diploma or both the International Baccalaureate Diploma and the Brent Diploma.

COURSE OFFERINGS

Students can choose their courses from the following group options:

LANGUAGE A1

English Language Literature HL/SL/Cr
 Filipino Literature HL/SL/Cr/Ab Initio
 Korean Literature HL/SL/Cr

LANGUAGE B/Ab Initio

Mandarin B HL/SL/Cr
 Mandarin Ab Initio/SL/Cr

SOCIAL SCIENCE

Business Management HL/SL/Cr
 History HL/SL/Cr
 Economics HL/SL/Cr

SCIENCE

Biology HL/SL/Cr
 Physics HL/SL/Cr
 Chemistry HL/SL/Cr

MATHEMATICS

Math Applications and Interpretations HL/SL/Cr
 Math Analysis and Approaches HL/SL/Cr

ARTS

Visual Arts HL/SL/Cr
 Theater HL/SL/Cr

HL - Higher Level IB | SL - Standard Level IB
 CR - Credit Level/Brent Diploma

GRADUATION REQUIREMENTS

4	English/Language Arts	In addition to their core subjects, students must fulfill requirements in Religious Studies, Computer Studies, Art, Music, Health, Physical Education, and complete both the Extended Essay and the Creativity, Activity, and Service (CAS) Program to successfully graduate from the High School Program.
4	Mathematics	
4	Social Science	
4	Science	
4	Modern Languages	
1	Health and Physical Ed.	
1	Theory of Knowledge	
2	Electives	

ACTIVITIES:

National Honor Society
 Student Council
 Junior Council
 Model United Nations
 Global Issues Network
 House System
 Pep Rally
 Career Awareness Week
 United Nations Week
 MS Outreach Program
 Lessons and Carols
 LS Community Day
 Filipino Day
 Spirit Week
 Field Day/Cross Country
 Sports Teams
 After School Clubs
 IB Art Exhibit
 Brent Day and Food Fest

GRADUATES' ACHIEVEMENTS

IB HIGHLIGHTS 2023

TOP SCORE: 37

9 OUT OF 12 candidates were awarded the full diploma

4 OUT OF 9 were **BILINGUAL DIPLOMAS**

BRENT AVERAGE SCORE: 28

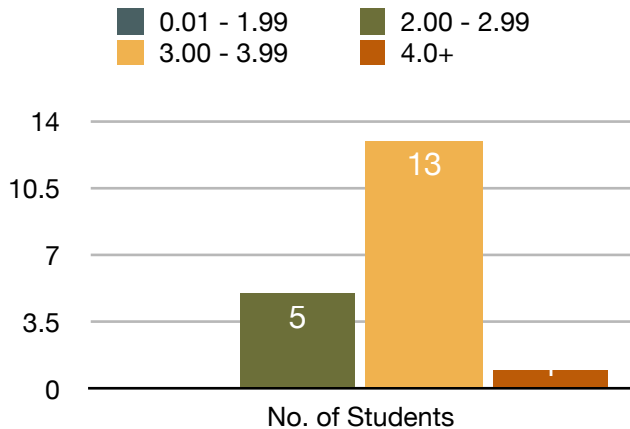
BRENT BAGUIO IB STATISTICS

Year	Total Candidates Registered	Diploma Candidates	Diploma Awarded	Brent Pass Rate %	Brent Average Points	Brent High Points
2020	15	14	12	86%	31	39
2021	16	15	15	100%	34	45
2022	12	12	12	100%	34	41
2023	16	12	9	75%	28	37

2023 IB SCORE DISTRIBUTION

Total Number of Students	7	6	5	4	3	2	1
GROUP 1 A LANGUAGE TOTAL:	0	3	10	11	0	0	0
GROUP 2 B LANGUAGE TOTAL:	2	1	1	4	0	0	0
GROUP 3 SOCIAL SCIENCE TOTAL:	0	2	6	7	3	1	0
GROUP 4 SCIENCE TOTAL:	0	1	1	7	7	2	0
GROUP 5 MATH TOTAL:	0	0	2	5	4	1	0
GROUP 6 ART/THEATER TOTAL:	0	1	3	2	0	0	0
	A	B	C	D	E	P	N
THEORY OF KNOWLEDGE	0	2	7	6	0	0	0
EXTENDED ESSAY	0	5	7	3	0	0	0
CAS						16	

CLASS of 2023 GPA DISTRIBUTION



UNIVERSITY ACCEPTANCES IN THE LAST 7 YEARS (2017 - 2023)

USA

Alabama University
American University
Arizona State University
Beloit University
Binghamton University
Boston University
California State University - Bakersfield
California State University - Sacramento
Case Western Reserve
Colorado State University
Columbia College Chicago
Creighton University
Dickinson College
De Paul University
Drexel University
Earlham College
Embry Riddle Aeronautical University
Fordham University
Hofstra University
HULT Int'l Business School
Indiana University
Knox College
Miami University
Michigan State University
New York University
North Carolina State University
Ohio State University
Penn State University

Purdue University
Quinnipiac University
Reed College
Rochester Institute of Technology
School of Art Institute of Chicago
St. John's College
Stony Brook University
SUNY Buffalo
SUNY Stony Brook
Syracuse University
Texas A&M University
University of Arizona
University of California - Berkeley
University of California - Davis
University of California - Irvine
University of California - LA
University of California - Santa Barbara
University of California - San Diego
University of California - Sta. Cruz
University of Cincinnati
University of Georgia
University of Hawaii
University of Illinois Urbana-Champaign
University of Iowa
University of Massachusetts
University of Michigan
University of Minnesota
University of Rhode Island
University of Richmond

University of San Francisco
University of Southern Mississippi
University of Texas at Austin
University of Wisconsin
Vanderbilt University
Vassar College
Virginia Commonwealth University
Virginia Tech
Washington and Jefferson College
Washington University in St. Louis
CANADA
Trent University
University of Guelph
University of Toronto
York University
AUSTRALIA
Monash University
University of Melbourne
University of New South Wales
University of Sydney
University of South Wales
NEW ZEALAND
University of Auckland
University of Canterbury
Victoria University of Wellington
JAPAN
Sophia University
Temple University
University of Tokyo

Waseda University
PHILIPPINES
Ateneo de Manila University
De La Salle University
Enderun College
Vassar College
Saint Louis University
Southville Int'l Schools and Colleges
University of Asia and the Pacific
University of the Cordilleras
University of the Philippines - Diliman
University of Sto. Tomas
SOUTH KOREA
George Mason University - Korea
SUNY Korea
University of Utah - Asia Campus
UAE
New York University, Abu Dhabi
CHINA
New York University, Shanghai
HONG KONG
City University of Hong Kong
Chinese University of Hong Kong
Polytechnic University of Hong Kong
The University of Hong Kong
Hong Kong University of Science & Technology
SINGAPORE
Singapore Institute of Management

SP Jain School of Global Management
Lasalle College of the Arts
UNITED KINGDOM
Anglia Ruskin University
Bath Spa University
Birkbeck, University of London
Bournemouth University
Edinburgh University
Essex University
Kings College London
Kingston University
Loughborough University
Nottingham College
Royal Holloway
University of London
Trinity College
University College London
Trinity College
University College London
University of Leeds
University of Leicester
University of Manchester
University of the Arts in London
University of Warwick
University of York
EUROPE
American School of Paris
University of Amsterdam

BRENT SCHOOL



BRENT EDUCATION FRAMEWORK IN BAGUIO

